

The technology to
change your world.



WRIGHT

Driving a greener future.

We make buses like
we've always made
them. With pride.

Buses are at the heart of our communities. They help promote economic growth, reduce road congestion, make transport equitable, and even help improve public health.

Wrightbus has long been at the heart of our communities too.

For over 75 years, as a family-run business, we've helped people reach their destinations all over the world. We've built iconic vehicles that have defined transport and added character to our cities and towns including the StreetCar in Las Vegas and the New Routemaster in London.

And now, after the successful launch of our groundbreaking zero emission product line we are carrying passengers into a cleaner future.

We remain the only British manufacture that manufacturers both single and double deck battery and fuel cell electric buses. Together with Queens University Belfast, we have an ability to carry out a range of academic-backed modelling analysis which is highly accurate, detailed and forms a key principle in the recommendation of the suggested battery capacity and vehicle performance.

Under Jo Bamford's leadership, Wrightbus is embarking on a new trajectory of innovation and environmental awareness. Just as with our Hydrogen bus, we're applying new energy solutions to help our vehicles meet their zero-emission targets. We are also creating more green economy UK jobs across our UK centric supply chain for our zero-emission buses.

For the world that has been waiting on greener buses, they have arrived.



The environment needs us, and we need the air we breathe.

Climate change and the pollution that causes it means we need to act now to avert catastrophe. Countries all over the globe have committed to initiatives such as the Paris Agreement. As expected, at COP 26, climate targets have been reviewed with new and even more ambitious targets in a bid to reduce global warming and stabilise our planet.

We therefore all have our part to do and Wrightbus is proud to help lead the way.

The drive to a cleaner tomorrow starts today. At Wrightbus, we recognise the negative effects that fossil fuel reliant vehicles have on our communities, from air pollution to noisy roads. That's why we have created the world's first production Hydrogen double deck bus, as well as introduced the world's most efficient Battery Electric double deck bus. These buses produce zero-emissions and therefore they don't pollute our urban air which makes our cities and towns safer to live in.

Both our Electroliner and Hydroliner buses are silent, and so, compared to diesel buses, they don't contribute to urban noise pollution which gives passengers a quieter experience.

It's our promise to the world that we will continue our quest of creating new types of zero emission transportation, and we will apply these discoveries to everything we design, build, and drive.

Together with us and your passengers we can help change the world.



Meet the StreetDeck Hydroliner: The world's first Hydrogen double deck bus.

Wrightbus are incredibly proud to have designed, created, and built the first ever production Hydrogen double deck bus.

These ground-breaking buses produce zero emissions and so are environmentally friendly, with water being the only by-product

- A range of up to 280 miles, can replace a diesel bus like-for-like
- Best in class noise and vibration for ultimate passenger comfort
- Manufactured using key components from tier 1 global suppliers
- Under 8 minutes refuelling time

We offer a wide variety of design specifications, with single or twin door available along with a range of modern options to enhance and meet operational requirements from the latest in refuelling technology to ultra-modern driver's dashboard controls.

And, of course, we take safety very seriously, with the StreetDeck Hydroliner meeting the highest industry safety standards.

For a world waiting for greener transport, say hello to the StreetDeck Hydroliner.



HYDROLINER



WATER THE ONLY BY-PRODUCT



IMPROVED AIR QUALITY



FAST RE-FUELLING TIME



UP TO 90 PASSENGERS

Meet the GB Kite Hydroliner.

Building on the success of the StreetDeck Hydroliner, in September 2021, Wrightbus unveiled the GB Kite Hydroliner which redefines industry standards in zero emission public transportation.

These ground-breaking buses produce zero emissions and so are less damaging to the environment, with water being the only by-product. Key features include:

- A range of up to 640 miles
- Manufactured using key components from tier 1 global suppliers
- Under 10 minutes refuelling time

We offer a wide variety of design specifications, with a range of modern and innovative options to enhance and meet operational requirements including a best-in-class telematic solution.

The GB Kite Hydroliner meets the highest standards in safety and is certified to UK NSSTA.

Welcome to the cleaner and quieter way to travel. Now a bus journey doesn't cost the earth with the new GB Kite Hydroliner.

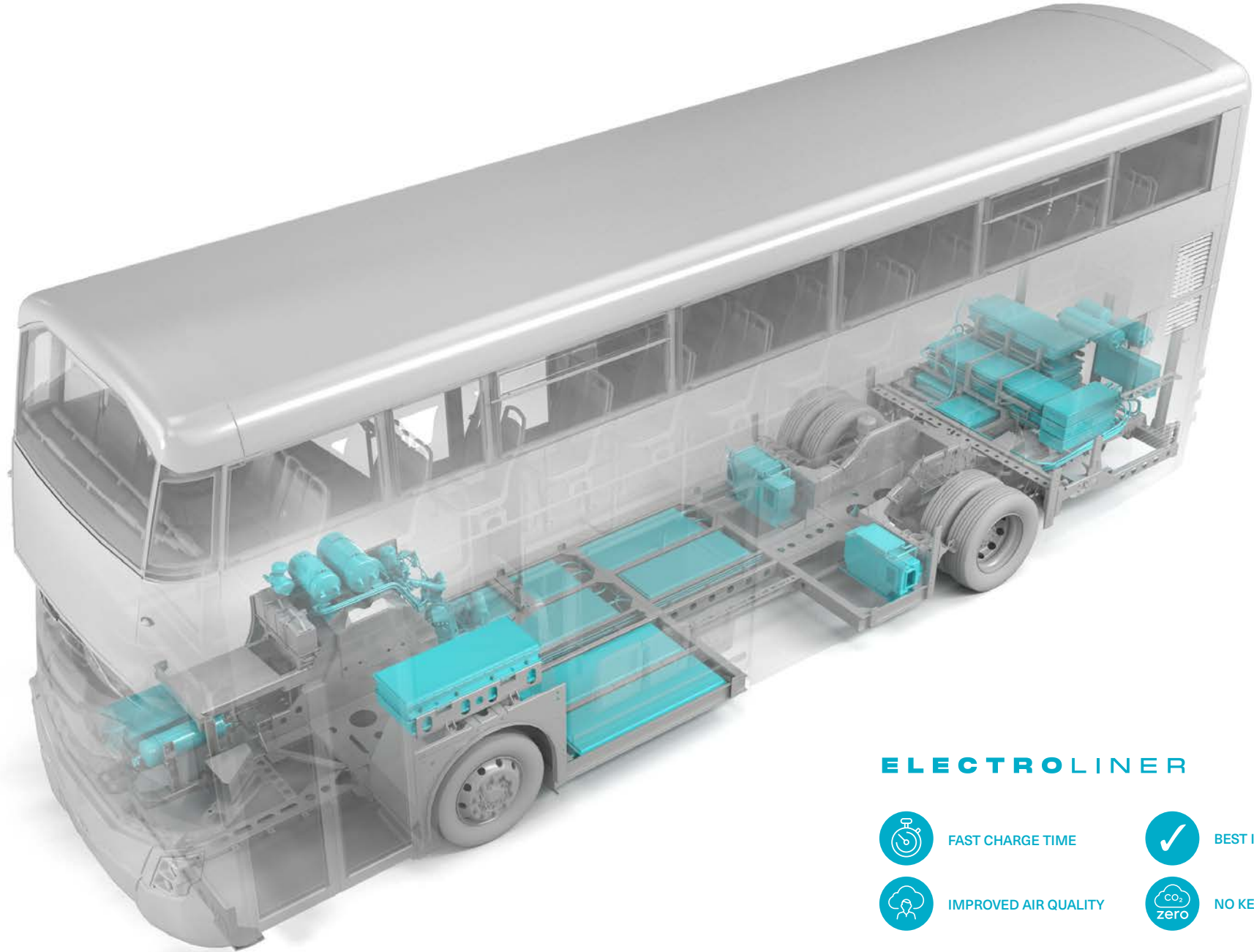


Meet the world's most efficient double deck bus the StreetDeck Electroliner:

Wrightbus is taking the lead in this product category. We have developed our ground-breaking most efficient Electric double deck bus, with a wealth of class-leading features.

- Best in class rapid charge time of just 2 ½ hours
 - Plug-In charge rate of up to 150kW
 - Pantograph charging up to 360kW
- No compromise to the seating layout or capacity compared to our diesel range ensuring maximum operational benefits and comfort to passengers
- Option of either 340kWh or 454kWh NexGen battery pack means the StreetDeck Electroliner can achieve up to 200 miles of range
- ULEB test certifies efficiency at 0.68kWh/km
- Most efficient grid to wheel ratio, lowering annual energy costs considerably

For the most efficient battery electric bus, look no further than the StreetDeck Electroliner.



ELECTROLINER



FAST CHARGE TIME



BEST IN CLASS EFFICIENCY



IMPROVED AIR QUALITY



NO KERBSIDE EMISSIONS

Meet the GB Kite Electroliner.

Using the StreetDeck Electroliner platform, the GB Kite Electroliner is able to share in its class-leading features and efficiency.

- Best in class rapid charge time of just 2 ½ hours
 - Plug-In charge rate of up to 150kW
 - Pantograph charging up to 360kW
- Over 80% commonality with StreetDeck, reducing depot parts inventory and training costs
- Complete low floor throughout the saloon providing a best-in-class spacious environment
- Industry leading warranty offering including up to 15 Year Battery Capacity warranty
- No compromise to the seating layout or capacity compared to our diesel range ensuring maximum operational benefits and comfort to passengers
- Option of either 340kWh, 454kWh or 567kWh NexGen batteries means the GB Kite Electroliner can achieve up to 250 miles of range
- Spacious and ultra-modern drivers cab area

The single deck electric bus of the future has arrived.



Our StreetDeck Euro VI Ultraliner Diesel bus is the vanguard of the double deck bus sector.

Launched in 2014, the StreetDeck Euro VI Ultraliner bus has established itself in the UK as the benchmark for a double deck bus. Customers across the UK have introduced fleets of this bus for passenger comfort, low running costs and ultra-low emissions to improve urban air quality.

Key features include:

- Best in class fuel efficiency: > 6% better based on FMFET results (First Millbrook Fuel Efficiency Trials)
- Daimler high torque engine
- Durable and well-integrated bus body and chassis resulting in less failures
- Aluminium body is easier to repair

The StreetDeck has also gained popularity in overseas markets with buses operating in countries such as Hong Kong and is still a firm favourite for customers who are looking for a low emission diesel double deck bus. These highly efficient buses are saving our customers money every day.

Look no further for the world's favourite, clean diesel double deck bus, the StreetDeck Ultraliner.



The GB Hawk. Built to one of our customers' unique specifications.

It's not one-size-fits-all when it comes to buses. On the contrary, bus operators all over the world have different needs that need tailored vehicles.

This innovative model was designed specifically for Translink in Northern Ireland for their Ulsterbus operation and is designed to meet their need for higher-mileage rural and interurban services.

The 12.1m GB Hawk is built on a lengthened version of the StreetDeck chassis and is powered by the latest Daimler Euro VI engine with an option of a 4 or 6 cylinder engine.

Highlights of the GB Hawk include:

- Outstanding Fuel Efficiency & Performance resulting in low total cost of ownership
- Utilises the latest Micro-Hybrid technology
- Designed and constructed to make maintenance easier
- Highly spacious passenger saloon environment

So, when we say we put our customers' needs and wishes first, we mean it.



The Wrightbus StreetLite. Now even more environmentally friendly.

We're very proud of the journey we've taken with our popular Wrightbus StreetLite Ultroliner.

This light-weight low-floor urban bus was first introduced in 2010. It was originally available as one body style (wheel forward) before the door forward, and other variants, were introduced in 2011 and 2012, respectively.

More importantly though, and a perfect illustration of the greener direction that our company has taken, all models and variants of the StreetLite are currently offered with the latest in Micro-Hybrid 3 technology.

The bus is legislatively compliant, and meets the standards set as an LCEB (Low Carbon Emission Bus) as well as having a Euro VI diesel micro-hybrid power train with ultra-low Euro VI emissions.

Needless to say, the StreetLite offers all the options you've come to expect from Wrightbus, allowing you to create a StreetLite Ultroliner to your own exact specifications.

Make transport lighter on our world with the Wrightbus StreetLite.



Welcome to the world's
most efficient zero
emission battery electric
open top bus.

The renowned StreetDeck is now available in zero emission battery electric technology, to take sightseers silently around cities with zero emissions on those journeys.

The bus has a capacity of up to 96 persons and a range of up to 200 miles, powered by 454kWh battery system. The bus can be fully recharged in 3 hours from a 150kWh charger.

The Electroliner's efficient power train and design gives this bus the best grid to wheel efficiency in its class, which will reduce operators running costs considerably.

City touring at its best with the StreetDeck Electroliner Open Top.



Telematics. We keep your buses running more efficiently and for longer.

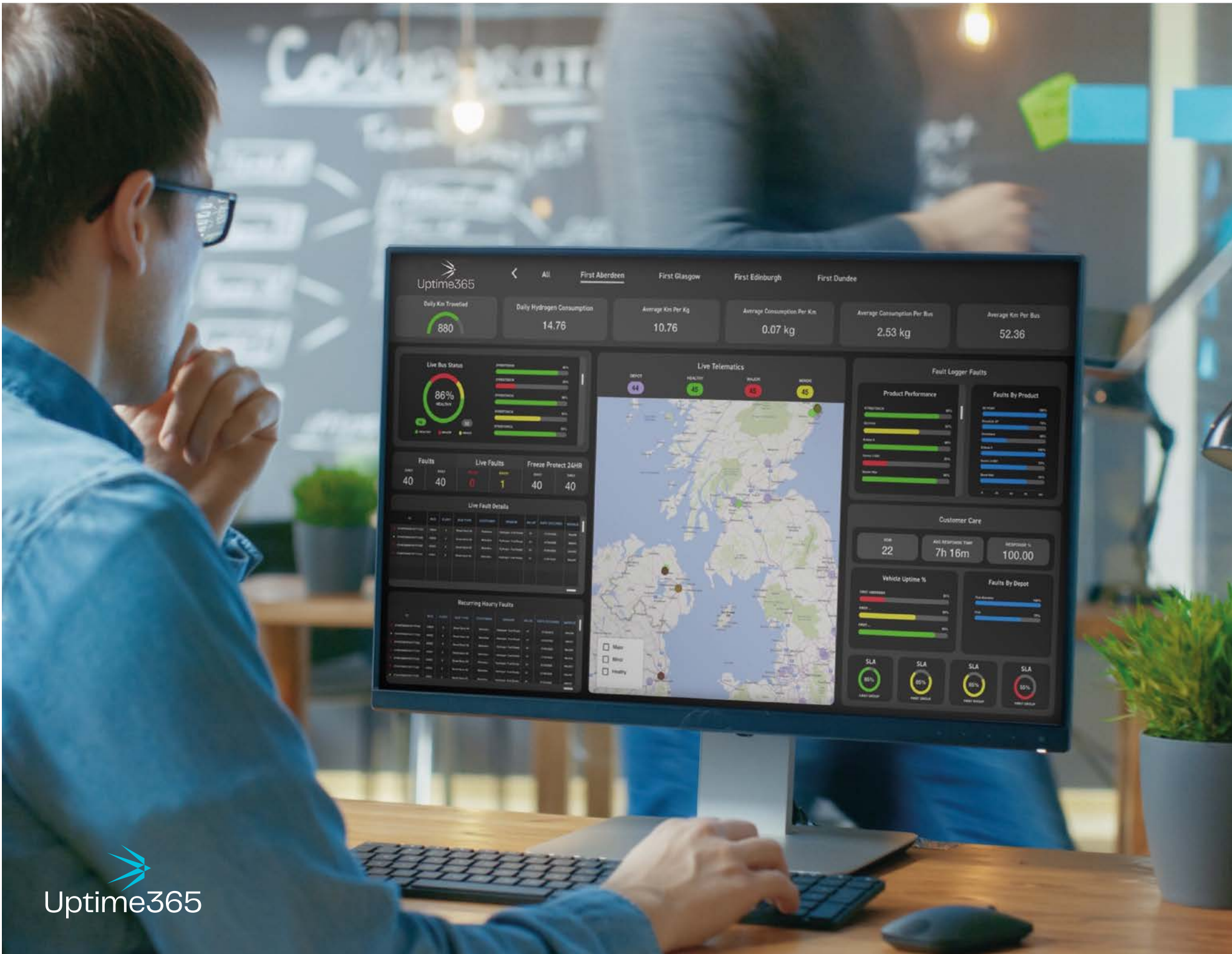
AllServiceOne Uptime 365, does exactly as the name suggests. It keeps bus fleets at peak performance and offers a clearer understanding of their operation and availability

The AI-based system provides real-time predictive data analysis, and can alert when a bus needs preventive intervention, saving on maintenance costs.

AllServiceOne Uptime 365 Key Features:

- All Fleet, Age and Technology Compatible
- Predictive maintenance
- Realtime AI technology that learns for itself – 5,000 sensors monitor performance
- Reduce downtime and lower costs
- Reduced on road breakdowns
- Visual Fleet Management

Stay up and running for longer with our advanced telematic systems.



Expert after sales support. We're always there for you.

Today's buses are marvels of technology. We see innovations and progress at every turn. But you also need reliable service to keep them running all-year round.

At Wrightbus, we're proud of our vehicles, but we're equally pleased with how **AllServiceOne** after-sales and personalised service is supporting our customers, after its introduction in 2021.

- Our on-board AI telematic system communicates events directly to our dedicated team of specialist engineers, who have hands-on expertise with the design and build of our vehicles
- Our Rapid Repair Centre in Ballymena can conduct major body repairs and get buses back on the road
- Our team is available 24/7, and customers can even log a fault on their mobile with our Technical Support App. The online parts portal and hotline can react immediately to customer needs, and over 95% of parts are delivered by the next morning
- Our teams of Master Technicians are embedded locally to support customers at their premises

Our team's commitment and expertise help keep your buses running even smoother.



Superior spare parts that make us a part of your success.

Keeping your fleet on the road is integral to your business success and ensuring your satisfaction is integral to ours.

That's why we are committed to providing only the highest quality parts, as well as exceptional parts support.

Our parts aftermarket programme is designed to keep your bus reliable and efficient for its entire lifespan and our programme includes:

- All parts supplied are guaranteed for a minimum of 12 months
- Comprehensive stock of parts for immediate delivery tailored to our customer needs.
- Dedicated Technical Support email, helpline, and online & mobile friendly service portal
- Full vehicle refurbishment to extend vehicle life through our Rapid Repair Centre
- Guaranteed parts supply for all body or chassis products within 24 hours through a centralised parts distribution centre
- Parts assurance packages tailored to customer needs
- Repair and maintenance contracts tailored to your requirements, including supply and fitment of parts

Become a part of the Wrightbus family – and we'll set you apart from the rest.



For more information contact:

Gary Glover – Regional Sales Manager
T: 07815 528773 E: gary.glover@wrightbus.com

Dave Keyte – Regional Sales Manager
T: 07525 265491 E: dave.keyte@wrightbus.com

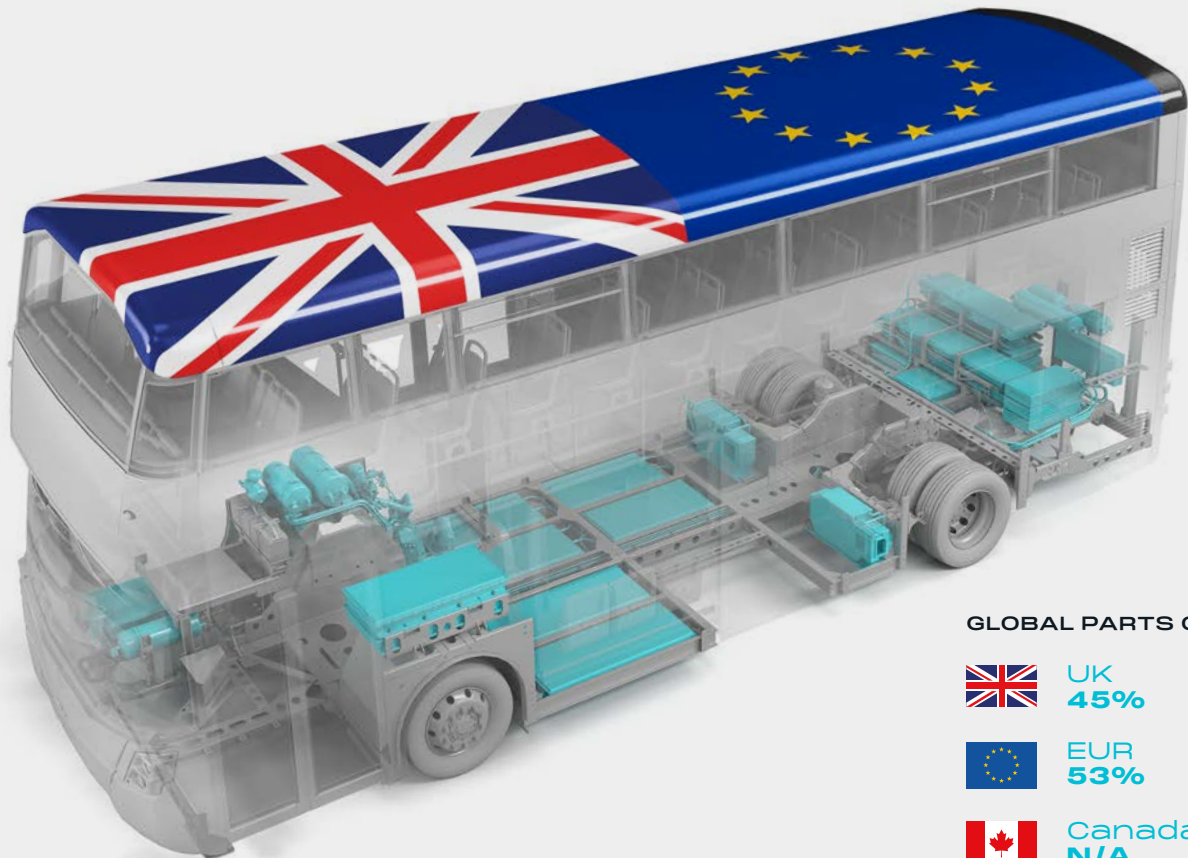
Andrew Blair – GB Service Manager
T: 07815 526604 E: andrew.blair@wrightbus.com

John Lamb – Regional Sale Manager
T: 07974 074080 E: john.lamb@allserviceone.com


Our buses may travel thousands of miles, but our parts don't.

Wrightbus sourcing strategy ensures we buy the best and buy 'local' as much as possible to reduce our manufacturing carbon footprint. Transformation of the transport industry to zero-emissions is also creating job opportunities in UK and EU across our supply chain network. Green jobs and green parts are an essential part of delivering a zero-emission business.

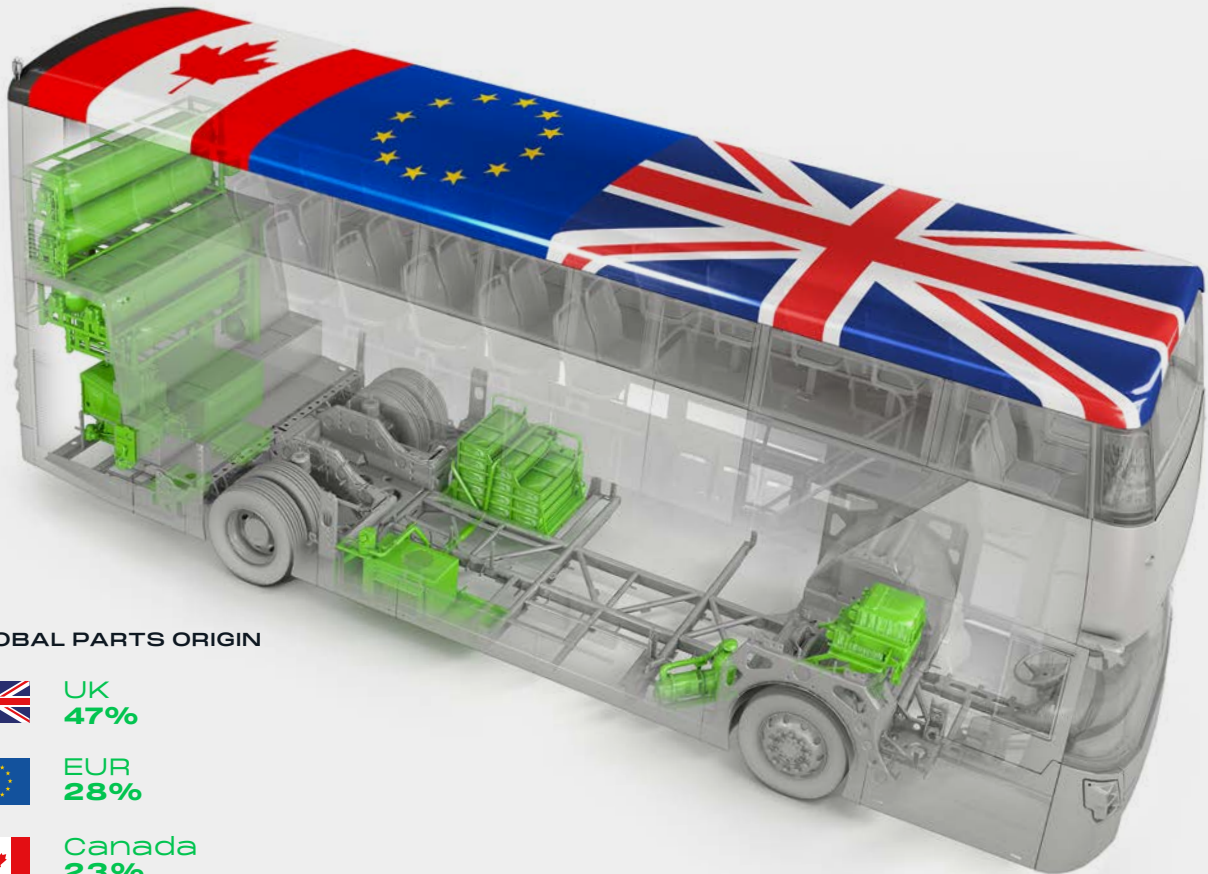
ELECTROLINER







GLOBAL PARTS ORIGIN

	UK 45%
	EUR 53%
	Canada N/A
	Other 2%

HYDROLINER



GLOBAL PARTS ORIGIN

	UK 47%
	EUR 28%
	Canada 23%
	Other 2%

SPECIFICATION

STREETDECK FCEV | **HYDROLINER**





WATER THE ONLY BY-PRODUCT



FAST RE-FUELLING TIME



IMPROVED AIR QUALITY



HYDROGEN PRODUCED WITH RENEWABLE ENERGY

Accessibility <ul style="list-style-type: none">- 1 or 2 door option available- Wheelchair compliant via electronic or manual ramp
Axle <ul style="list-style-type: none">- Front axle – ZF RL 82 EC- Rear axle – ZF AVE 130
Battery System <ul style="list-style-type: none">- Forsee LTO Pulse 2.5- 27.4kWh capacity
Dimensions (MM / 10.9) <ul style="list-style-type: none">- Height: 4,395- Length: 10,905- Overhang front: 2,607- Overhang rear: 2,898- Wheelbase: 5,400- Width: 2,520
Fuel Cell Module <ul style="list-style-type: none">- Ballard FCveloCity- 85kW Fuel Cell Module
Gross Vehicle Weight <ul style="list-style-type: none">- 18,600kg
Hydrogen Storage <ul style="list-style-type: none">- Filling Pressure: 350Bar- Hydrogen Storage: 27kg / 1,120 Litres

Hydrogen Safety <p>The StreetDeck Hydroliner adheres to all industry safety standards and has successfully tested the vehicle on and not limited to the following:</p> <ul style="list-style-type: none">- Accelerated Stress Rapture Test- Extreme Temperature Pressure Cycle Test Hydraulic Test- Hydrogen quality is aligned to ISO14687 or SAE Specification- Penetration Test, Chemical Exposure and Composite Flaw Testing- Storage Tank Testing
Legislative Compliance <ul style="list-style-type: none">- Certified to NSSTA requirement
Optional Specification Items <p>Wrightbus are able to offer a range of specification items that include but not limited to:</p> <ul style="list-style-type: none">- Additional Hydrogen Storage Tanks- Alloy Wheels- Camera Mirror Systems- CCTV Systems- Destination Equipment & Next Stop Announcement Systems- Drivers Cab Air Conditioning- Fire Suppression Systems- Range of seating models available which include seat belts for both driver and passengers- Staircase Glazing- Telematics- Wi-Fi

Passenger Capacity <ul style="list-style-type: none">- Maximum capacity: 86- Max seated capacity: 65- Max standing capacity: 26
Refuel Time <ul style="list-style-type: none">- Under 8 minutes for fast fill system
Vehicle Range <ul style="list-style-type: none">- Standard Tank configuration – approx 280miles.
Wheels & Tyres <ul style="list-style-type: none">- 275 / 70R x 22.5 Tubeless Tyre- Choice of Bridgestone or Michelin

SPECIFICATION

GB KITE DF FCEV | **HYDROLINER**





WATER THE ONLY BY-PRODUCT



FAST RE-FUELLING TIME



IMPROVED AIR QUALITY



HYDROGEN PRODUCED WITH RENEWABLE ENERGY

Accessibility <ul style="list-style-type: none">- 1 or 2 door option available- Wheelchair compliant via electronic or manual ramp
Axle <ul style="list-style-type: none">- Front axle – ZF RL 82 EC- Rear axle – ZF AV 133
Battery System <ul style="list-style-type: none">- Microvast x2 MV – C Modules- 54kWh Capacity
Dimensions (MM / 10.9 / 11.6 / 12.5) <ul style="list-style-type: none">- Height: 3,380 / 3,380 / 3,380- Length: 10,947 / 11,667 / 12,469- Overhang front: 2,952 / 2,952 / 2,952- Overhang rear: 2,648 / 2,648 / 3,450- Wheelbase: 5,347 / 6,067 / 6,067- Width: 2,520 / 2,520 / 2,520
Electric Traction <ul style="list-style-type: none">- Voith VEDS MD 250kW- Torque – 2,850Nm- Max speed – 2,850rpm
Fuel Cell Module <ul style="list-style-type: none">- Ballard FCmove- 70kW Fuel Cell Module
Gross Vehicle Weight <ul style="list-style-type: none">- 19,500kg

Hydrogen Storage <ul style="list-style-type: none">- Filling Pressure: 350 Bar- Hydrogen Storage utilizing a 4 Cylinder configuration – 32kg- Hydrogen Storage utilizing a 5 Cylinder configuration – 40kg- Hydrogen Storage utilizing a 7 Cylinder configuration – 50kg
Hydrogen Safety <p>The GB Kite Hydroliner adheres to all industry safety standards and has successfully tested the vehicle on and not limited to the following:</p> <ul style="list-style-type: none">- Accelerated Stress Rapture Test- Extreme Temperature Pressure Cycle Test Hydraulic Test- Hydrogen quality is aligned to ISO14687 or SAE Specification- Penetration Test, Chemical Exposure and Composite Flaw Testing- Storage Tank Testing
Legislative Compliance <ul style="list-style-type: none">- Certified to NSSTA requirement

Optional Specification Items <p>Wrightbus are able to offer a range of specification items that include but not limited to:</p> <ul style="list-style-type: none">- Additional Hydrogen Storage Tanks- Alloy Wheels- Camera Mirror Systems- CCTV Systems- Destination Equipment & Next Stop Announcement Systems- Drivers Cab Air Conditioning- Fire Suppression Systems- Range of seating models available which include seat belts for both driver and passengers- Telematics- Wi-Fi
Passenger Capacity <ul style="list-style-type: none">- Maximum capacity: 88 / 85 / 82- Max seated capacity: 37 / 41 / 45- Max standing capacity: 57 / 50 / 43
Refuel Time <ul style="list-style-type: none">- Under 10 minutes
Vehicle Range <ul style="list-style-type: none">- 32kg H₂ approx 450miles: Hydroliner SR- 40kg H₂ approx 560miles:Hydroliner ER- 50kg H₂ approx 640miles: Hydroliner LR
Wheels & Tyres <ul style="list-style-type: none">- 275 / 70R x 22.5 Tubeless Tyre- Choice of Bridgestone or Michelin

SPECIFICATION

STREETDECK BEV | ELECTROLINER



FAST CHARGE TIME

IMPROVED AIR QUALITY

BEST IN CLASS RANGE

NO KERBSIDE EMISSIONS

Accessibility

- 1 or 2 door option available
- Wheelchair compliant via electronic or manual ramp

Axle

- Front axle – ZF RL 82 EC
- Rear axle – ZF AV 133

Battery System

- Forsee Power
- 60Ah VDA PHEV2 modules (3P4S)
- Option of Forsee Power 340kWh or 454kWh

Battery Charging Systems

- CCS2.0 compliant Combo 2 Socket
- Up to 150kW plug-in charge rate available
- Up to 360kW opportunity charging available

Battery Charging Times

- 340kWh – 2 ½ Hours @ 150kW Charge Rate
- 454kWh – 3 Hours @ 150kW Charge Rate

Dimensions (MM / 10.6)

- Height: 4,395
- Length: 10,582
- Overhang front: 2,607
- Overhang rear: 2,495
- Wheelbase: 5,480
- Width: 2,520

Electric Traction

- Voith VEDS MD 250kW
- Torque – 2,850Nm
- Max speed – 2,850rpm

Emissions

ZEMO Ultra Low Emission Bus Test Results

- 0.68 kWh/km
- 2.0 CO₂ g per passenger per km
- 86% Well-to-Wheel CO₂ saving against Euro VI Diesel

Gross Vehicle Weight

- 19,500kg

Legislative compliance

- Certified to NSSTA requirements

Optional Specification Items

Wrightbus are able to offer a range of specification items that include but not limited to:

- Additional Battery Capacity
- Alloy Wheels
- Camera Mirror Systems
- CCTV
- Destination Equipment & Next Stop Announcement Systems
- Drivers Cab Air Conditioning
- Fire Suppression Systems
- Range of Extended Warranties
- Range of seating models available which include seat belts for both driver and passengers
- Wi-Fi

Passenger Capacity	340kWh	454kWh
- Maximum capacity:	96	86
- Max seated capacity:	74	72
- Max standing capacity:	28	22

Vehicle Range

- 340kWh approx 150miles: Electroliner SR
- 454kWh approx 200miles: Electroliner ER

Wheels & Tyres

- 275 / 70R x 22.5 Tubeless Tyre
- Choice of Bridgestone or Michelin

SPECIFICATION

GB KITE DF BEV | ELECTROLINER



FAST CHARGE TIME

IMPROVED AIR QUALITY

BEST IN CLASS RANGE

NO KERBSIDE EMISSIONS

Accessibility

- 1 or 2 door option available
- Wheelchair compliant via electronic or manual ramp

Axle

- Front axle – ZF RL 82 EC
- Rear axle – ZF AV 133

Battery System

- Forsee Power
- 60Ah VDA PHEV2 modules (3P4S)
- Option of Forsee Power 340kWh, 454kWh or 567kWh

Battery Charging Systems

- CCS2.0 compliant Combo 2 Socket
- Up to 150kW plug-in charge rate available

Battery Charging Times

- 340kWh – 2 ½ Hours @ 150kW Charge Rate
- 454kWh – 3 Hours @ 150kW Charge Rate
- 567kWh – 3 ½ Hours @ 150kW Charge Rate

Dimensions (MM / 10.9 / 11.6 / 12.5)

- Height: 3,380 / 3,380 / 3,380
- Length: 10,947 / 11,667 / 12,469
- Overhang front: 2,952 / 2,952 / 2,952
- Overhang rear: 2,648 / 2,648 / 3,450
- Wheelbase: 5,347 / 6,067 / 6,067
- Width: 2,520 / 2,520 / 2,520

Electric Traction

- Voith VEDS MD 250kW
- Torque – 2,850Nm
- Max speed – 2,850rpm

Gross Vehicle Weight

- 19,500kg

Legislative compliance

- Certified to NSSTA requirements

Optional Specification Items

Wrightbus are able to offer a range of specification items that include but not limited to:

- Additional Battery Capacity
- Alloy Wheels
- Camera Mirror Systems
- CCTV
- Destination Equipment & Next Stop Announcement Systems
- Drivers Cab Air Conditioning
- Fire Suppression Systems
- Range of Extended Warranties
- Range of seating models available which include seat belts for both driver and passengers
- Wi-Fi

Passenger Capacity

- Maximum capacity: 88 / 85 / 82
- Max seated capacity: 37 / 41 / 45
- Max standing capacity: 57 / 50 / 43

Vehicle Range

- 340kWh approx 150miles: Electroliner SR
- 454kWh approx 200miles: Electroliner LR
- 567kWh approx 250miles: Electroliner ER

Wheels & Tyres

- 275 / 70R x 22.5 Tubeless Tyre
- Choice of Bridgestone or Michelin

SPECIFICATION

STREETDECK EU6 | **ULTROLINER**



Accessibility <ul style="list-style-type: none">- 1 or 2 door option- Wheelchair compliant via electronic or manual ramp
Axle <ul style="list-style-type: none">- Front Axle – ZF RL 82 EC- Rear Axle – ZF AV 133
Dimensions (MM / 10.6 / 11 / 11.5) <ul style="list-style-type: none">- Height: 4,395 / 4,395 / 4,395- Length: 10,567 / 10,990 / 11,467- Overhang front: 2,607 / 2,607 / 2,607- Overhang rear: 2,560 / 2,560 / 2,560- Wheelbase: 5,400 / 5,400 / 6,300- Width: 2,520 / 2,520 / 2,520
Engine <ul style="list-style-type: none">- Daimler OM934 or Daimler OM936 Euro VI- Option of either 4 or 6 Cylinder- Displacement of 5.1L or 7.7L
Fuel & Ad Blue Tank <ul style="list-style-type: none">- Aluminium fuel tank capacity of either 190L or 245L- AD Blue Capacity of 19L

Gross Vehicle Weight <ul style="list-style-type: none">- 18,600kg
Legislative Compliance <ul style="list-style-type: none">- Certified to UK NSSTA- Qualifies for LCEB
Micro Hybrid Compatibility <ul style="list-style-type: none">- Micro Hybrid 3
Optional Specification Items <p>Wrightbus are able to offer a range of specification items that include but not limited to:</p> <ul style="list-style-type: none">- Alloy Wheels- Camera Mirror Systems- CCTV- Destination Equipment & Next Stop Announcement Systems- Drivers Cab Air Conditioning- Fire Suppression Systems- Range of Extended Warranties- Range of seating models available which include seat belts for both driver and passengers- Staircase Glazing- Wi-Fi

Passenger Capacity <ul style="list-style-type: none">- Maximum capacity: 100 / 96 / 98- Max seated capacity: 75 / 74 / 83- Max standing capacity: 28 / 26 / 18
Transmission <ul style="list-style-type: none">- Voith D854.6- 4 speed fully automatic gearbox
Wheels & Tyres <ul style="list-style-type: none">- 245 / 70R x 22.5 Tubeless Tyre- Choice of Bridgestone, Continental, or Michelin

SPECIFICATION

GB HAWK EU6 | **DIESEL**



Vehicle Accessibility <ul style="list-style-type: none">- 1 or 2 door option available- Wheelchair compliant via electronic or manual ramp
Axle <ul style="list-style-type: none">- Front Axle – ZF RL 82 EC- Rear Axle – ZF AV 133
Dimensions (MM / 12.1) <ul style="list-style-type: none">- Height: 3,200- Length: 12,122- Overhang front: 2,607- Overhang rear: 3,020- Wheelbase: 6,495- Width: 2,550
Engine <ul style="list-style-type: none">- Daimler OM934 or Daimler OM936 Euro VI- Option of 4 or 6 Cylinder- Displacement of 5.1L or 7.7L
Fuel & Ad Blue Tank <ul style="list-style-type: none">- Aluminium fuel tank capacity of 225L- AD Blue Capacity of 19L

Gross Vehicle Weight <ul style="list-style-type: none">- 18,200kg
Legislative Compliance <ul style="list-style-type: none">- Certified to NSSTA requirements
Micro Hybrid Compatibility <ul style="list-style-type: none">- Micro Hybrid 3
Optional Specification Items <p>Wrightbus are able to offer a range of specification items that include but not limited to:</p> <ul style="list-style-type: none">- Alloy Wheels- Camera Mirror Systems- CCTV- Destination Equipment & Next Stop Announcement Systems- Drivers Cab Air Conditioning- Fire Suppression Systems- Range of Extended Warranties- Range of seating models available which include seat belts for both driver and passengers- Wi-Fi

Passenger Capacity <ul style="list-style-type: none">- Maximum capacity: 91- Max seated capacity: 40- Max standing capacity: 56
Transmission <ul style="list-style-type: none">- Voith D854.6- 4 speed fully automatic gearbox
Wheels & Tyres <ul style="list-style-type: none">- 275 / 70R x 22.5 Tubeless Tyre- Choice of Bridgestone, Continental, or Michelin

SPECIFICATION

STREETLITE DF EU6 | **ULTROLINER**



Vehicle Accessibility <ul style="list-style-type: none">- 1 or 2 door option- Wheelchair compliant via electronic or manual ramp
Axle <ul style="list-style-type: none">- Front Axle: DANA NDS IFS- Rear Axle: DANA G140
Dimensions (MM / 9.6 / 10.2 / 10.8 / 11.5) <ul style="list-style-type: none">- Height: 3060 / 3060 / 3060 / 3060- Length: 9,580 / 10,280 / 10,805 / 11,505- Overhang front: 2,500 / 2,500 / 2,500 / 2,500- Overhang rear: 2,638 / 2,638 / 2,638 / 2,638- Wheelbase: 4,442 / 5,142 / 5,667 / 6,367- Width: 2,445 / 2,445 / 2,445 / 2,445
Engine <ul style="list-style-type: none">- Daimler OM934 Euro VI- 4 Cylinder- Displacement of 5.1L
Fuel & Ad Blue Tank <ul style="list-style-type: none">- Aluminium fuel tank capacity of 175L- AD Blue Capacity of 17L

Gross Vehicle Weight <ul style="list-style-type: none">- 13,408kg
Legislative Compliance <ul style="list-style-type: none">- Certified to NSSTA requirements- Qualifies for LCEB
Micro Hybrid Capacity <ul style="list-style-type: none">- Micro Hybrid 3
Optional Specification Items <p>Wrightbus are able to offer a range of specification items that include but not limited to:</p> <ul style="list-style-type: none">- Alloy Wheels- Camera Mirror Systems- CCTV from a range of suppliers- Destination Equipment & Next Stop Announcement Systems- Drivers Cab Air Conditioning- Fire Suppression Systems- Range of Extended Warranties- Range of seating models available which include seat belts for both driver and passengers- Wi-Fi

Passenger Capacity <ul style="list-style-type: none">- Maximum capacity: 75 / 77 / 76 / 74- Max seated capacity: 33 / 37 / 41 / 45- Max standing capacity: 48 / 46 / 41 / 35
Safety & Support <ul style="list-style-type: none">- Daytime running lights as standard- High centred mounted rear brake lights- Standard reversing alarm- Engine door interlock- Battery isolator- Non-slip floor covering- Access to Wrightbus parts & Service
Transmission <ul style="list-style-type: none">- Voith D824.6- 4 speed fully automatic gearbox
Wheels & Tyres <ul style="list-style-type: none">- 245 / 70R x 19.5 Tubeless Tyre- Choice of Bridgestone, Continental, or Michelin

SPECIFICATION

STREETLITE WF EU6 | **ULTROLINER**



Vehicle Accessibility <ul style="list-style-type: none">- 1 or 2 door option- Wheelchair compliant via electronic or manual ramp
Axle <ul style="list-style-type: none">- Front – Dana NDS IFS- Rear – Dana G140
Dimensions (MM / 8.8 / 9.5) <ul style="list-style-type: none">- Height: 3,022 / 3,022- Length: 8,780 / 9,480- Overhang front: 653 / 653- Overhang rear: 2,638 / 2,638- Wheelbase: 5,489 / 6,189- Width: 2,445 / 2,445 /
Engine <ul style="list-style-type: none">- Daimler OM934 Euro VI- 4 Cylinder- Displacement of 5.1L
Fuel & Ad Blue Tank <ul style="list-style-type: none">- Aluminium fuel tank capacity of 175L- AD Blue Capacity of 17L

Gross Vehicle Weight <ul style="list-style-type: none">- 12,080kg
Legislative Compliance <ul style="list-style-type: none">- Certified to NSSTA requirements
Micro Hybrid Compatibility <ul style="list-style-type: none">- Micro Hybrid 3
Optional Specification Items <p>Wrightbus are able to offer a range of specification items that include but not limited to:</p> <ul style="list-style-type: none">- Alloy Wheels- Camera Mirror Systems- CCTV- Destination Equipment & Next Stop Announcement Systems- Drivers Cab Air Conditioning- Fire Suppression Systems- Range of Extended Warranties- Range of seating models available which include seat belts for both driver and passengers- Wi-Fi

Passenger Capacity <ul style="list-style-type: none">- Maximum capacity: 58 / 58- Max seated capacity: 33 / 37- Max standing capacity: 27 / 23
Transmission <ul style="list-style-type: none">- Voith D824.6- 4 speed fully automatic gearbox
Wheels & Tyres <ul style="list-style-type: none">- 245 / 70R x 17.5 Tubeless Tyre- Choice of Bridgestone, Continental, or Michelin

STREETDECK OPEN TOP | ELECTROLINER



 FAST CHARGE TIME

 IMPROVED AIR QUALITY

 BEST IN CLASS RANGE

 NO KERBSIDE EMISSIONS

Accessibility

- 1 or 2 door option available
- Wheelchair compliant via electronic or manual ramp

Axle

- Front axle – ZF RL 82 EC
- Rear axle – ZF AV 133

Battery System

- Forsee Power 340kWh or 454kWh
- 60AH PHEV Modules (3P4S)

Battery Charging Systems

- CCS2.0 compliant Combo 2 Socket
- Up to 150kW plug-in charge rate available

Battery Charging Times

- 340kWh – 2 ½ Hours @ 150kW Charge Rate

Dimensions (MM / 10.6)

- Height: 4,395
- Length: 11,302
- Overhang front: 2,607
- Overhang rear: 2,495
- Wheelbase: 6,200
- Width: 2,520

Electric Traction

- Voith VEDS MD 250kW
- Torque – 2,850Nm
- Max speed – 2,850rpm

Emissions

ZEMO Ultra Low Emission Bus Test Results

- 0.68 kWh/km
- 2.0 CO₂ g per passenger per km
- 86% Well-to-Wheel CO₂ saving against Euro VI Diesel

Gross Vehicle Weight

- 19,500kg

Legislative compliance

- Certified to NSSTA requirements

Optional Specification Items

Wrightbus are able to offer a range of specification items that include but not limited to:

- Alloy Wheels
- Camera Mirror Systems
- CCTV
- Drivers Cab Air Conditioning
- Fire Suppression Systems
- Range of Extended Warranties
- Range of seating models available which include seat belts for both driver and passengers
- Telematics
- Wi-Fi

Passenger Capacity

- Maximum capacity: 96
- Max seated capacity: 78
- Max standing capacity: 24

Vehicle Range

- 340kWh approx 150miles

Wheels & Tyres

- 275 / 70R x 22.5 Tubeless Tyre
- Choice of Bridgestone or Michelin





Change your world by getting
in touch today.

Gary Kernohan – Head of Sales UK & Ireland

T: 07740 761313 E: gary.kernohan@wrightbus.com

Phil Owen – Head of Sales (Key Accounts)

T: 07974 045614 E: phil.owen@wrightbus.com

Chris Martin – Head of Business Development UK

T: 07936 006652 E: chris.martin@wrightbus.com

Mick Campbell – Head of Sales (Key Accounts)

T: 07816 124107 E: mick.campbell@wrightbus.com

Steve Jackson – UK Sales Manager

T: 07773 317730 E: steve.jackson@wrightbus.com

You can also find out all you need to know about our company at www.wrightbus.com